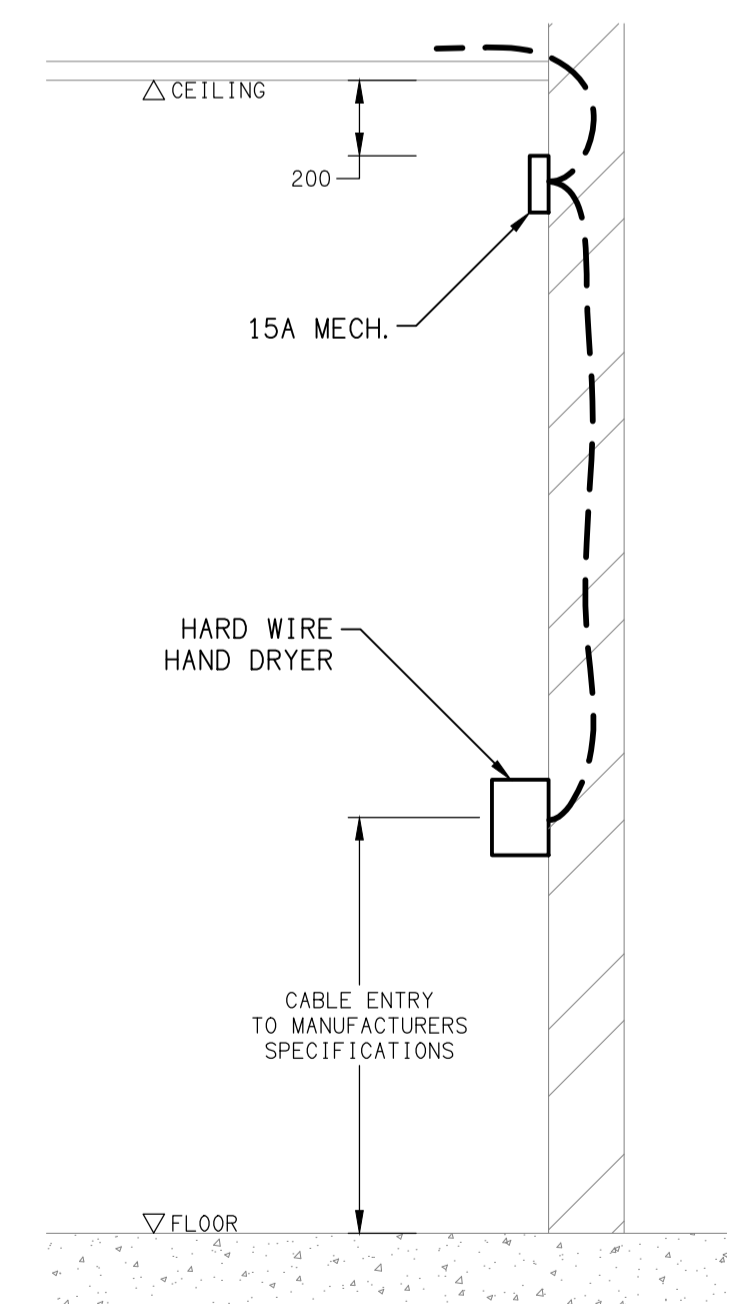


LEGEND

- ELECTRICAL SERVICES SWITCHBOARD.
- SWITCHBOARD / CONTROL PANEL NOT PROVIDED AS PART OF THE ELECTRICAL SUBCONTRACT.
- SINGLE POWER OUTLET.
- DOUBLE POWER OUTLET.
- SPECIAL PURPOSE POWER OUTLET.
- SIGNAGE OUTLET / CONNECTION.
- SINGLE PHASE ISOLATOR.
- THREE PHASE ISOLATOR.
- HAND DRYER CONNECTION.
- BOLLARD** ELECTRICAL OUTLET BOLLARD.
- RISER DUCT** ELECTRICAL RISER DUCT, TYPE AS NOTED.
- PIT** ELECTRICAL SERVICES PIT, TYPE AS NOTED.
- UNDERGROUND CONDUIT, TYPE AS NOTED.
- ONE-WAY LIGHT SWITCH.
- TWO-WAY LIGHT SWITCH.
- LIGHTING CONTROL SWITCH PANEL, TYPE AS NOTED.
- CIRCUIT LINE.
- SWITCH LINE.
- DB-x - Py** POWER CIRCUIT DESIGNATION. DENOTES DB AND CIRCUIT.
- LIGHTING CONTROL CHANNEL REFERENCE.
- ELECTRICAL EQUIPMENT AS NOTED.
- 600 x 600 ACCESS PANEL BY BUILDER.
- CAT 6 RJ45 UTP COMMUNICATIONS OUTLET.
- REFER TO DETAIL NOTED FOR THE AREA SHOWN HATCHED. ADDITIONAL OUTLETS & FITTINGS MAY BE SHOWN ON DETAIL.
- DIM** MANUAL POT DIMMER / SWITCH.
- FSC** MANUAL FAN SPEED CONTROL / SWITCH.
- ROT** MANUAL 2-HOUR PUSH BUTTON RUN-ON TIMER.
- PE** PHOTO ELECTRIC DAY LIGHT SWITCH.
- TC** 24-HOUR, 7-DAY TIME CLOCK SWITCH.
- CL** LIGHTING CONTACTOR.
- E1** E1: RECESSED NON-MAINTAINED EMERGENCY LIGHT.
- EX** EX: GENERAL EMERGENCY LED EXIT LIGHT.
- GL01** GL01: GARDEN STAKE LIGHT.
- L1** L1: 1200 LONG SURFACE MOUNTED IP65 BATTEN C/W SENSOR.
- L2** L2: NO LONGER REQUIRED.
- L3** L3: EXISTING POLE MOUNTED LIGHT.
- L4** L4: ADJUSTABLE DALI DIMMABLE IP65 TREE CANOPY POLE LIGHT.
- L5** L5: ADJUSTABLE DALI DIMMABLE IP65 FLOOD LIGHT MOUNTED ON HIGH LEVEL POST.
- L6** L6: SUSPENDED FESTOON LAMP SYSTEM C/W COPPER SHADE.

LEGEND

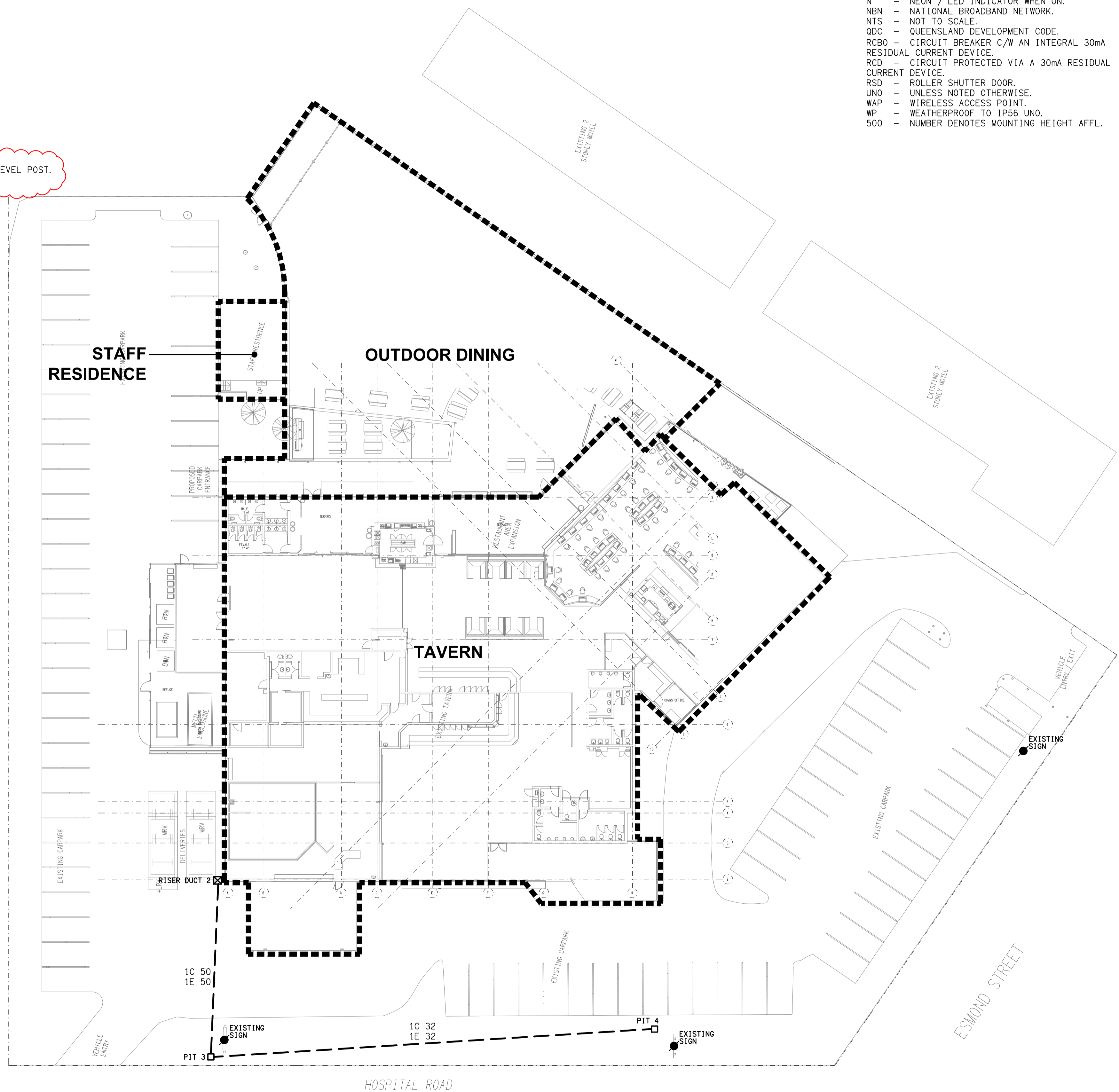
- L7** L7: SUSPENDED FESTOON LAMP SYSTEM.
- L8** L8: BAR COUNTER LED STRIP LIGHT.
- L9** L9: BAR CENTRAL ISLAND LED STRIP LIGHT.
- L10** L10: AMENITY DOWNLIGHT.
- L11** L11: RECESSED DOWNLIGHT.
- L12** L12: RECESSED ADJUSTABLE DOWNLIGHT.
- L13** L13: MIRROR LED STRIP LIGHT.
- L14** L14: TV SURROUND LED STRIP LIGHT.
- L15** L15: TRUCK LIGHT.
- L16** L16: ADJUSTABLE STAGE SPOT LIGHT MOUNTED ON HIGH LEVEL POST.
- L17** L17: WALKWAY POST TOP LIGHT.
- L18** L18: MOTEL WALKWAY POST LIGHT.
- L19** L19: MOTEL SIGN POST LIGHT.
- L20** L20: TAVERN WALKWAY POST LIGHT.
- L21** L21: MOTEL WALKWAY POST LIGHT.
- L22** L22: MOTEL CEILING MOUNTED SIGN LIGHT.
- PD0x** PD0x: DECORATIVE PENDANT, TYPE AS NOTED.
- POLE x** POLE x: LIGHTING POLE, TYPE AS NOTED.
- CF** CF: CEILING FAN, WHITE.
- USB** DOUBLE POWER OUTLET C/W USB CHARGING PORTS.
- AD** SINGLE AUTO DOOR POWER OUTLET.



DETAIL
HAND DRYER CONNECTION
NOT TO SCALE

ABBREVIATIONS

- A - AMP CURRENT RATING
- AB - MOUNT ABOVE BENCH.
- AFFL - ABOVE FINISHED FLOOR LEVEL.
- BB - MOUNT BELOW BENCH.
- CEIL - MOUNT ON CEILING.
- C/W - COMPLETE WITH.
- HWS - HOT WATER SYSTEM.
- MCB - MINIATURE CIRCUIT BREAKER.
- MCCB - MOLDED CASE CIRCUIT BREAKER.
- MSB - MAIN SWITCHBOARD.
- N - NEON / LED INDICATOR WHEN ON.
- NBN - NATIONAL BROADBAND NETWORK.
- NTS - NOT TO SCALE.
- ODC - QUEENSLAND DEVELOPMENT CODE.
- RCBO - CIRCUIT BREAKER C/W AN INTEGRAL 30mA RESIDUAL CURRENT DEVICE.
- RCD - CIRCUIT PROTECTED VIA A 30mA RESIDUAL CURRENT DEVICE.
- RSD - ROLLER SHUTTER DOOR.
- UNO - UNLESS NOTED OTHERWISE.
- WAP - WIRELESS ACCESS POINT.
- WP - WEATHERPROOF TO IP55 UNO.
- 500 - NUMBER DENOTES MOUNTING HEIGHT AFFL.



ELECTRICAL DESIGN GROUP BRISBANE
PTY LTD
ACN 092 710 793
TRADING AS:
ELECTRICAL DESIGN GROUP

THE COPYRIGHT OF THIS DRAWING
REMAINS THE PROPERTY OF THE
ELECTRICAL DESIGN GROUP.
USE FIGURED DIMENSIONS
IN PREFERENCE TO SCALE.
ALL DIMENSIONS TO BE
VERIFIED ONSITE.

ELECTRICAL DESIGN GROUP
ELECTRICAL BUILDING SERVICES CONSULTANTS
BRISBANE GOLD COAST
P.O. Box 15, Sherwood Q.4075
Phone: (07) 3278 4375
Email: brisbane@edg.net.au
Web: www.edg.net.au

PROJECT:
**MARABOON TAVERN, EMERALD
2025 ALTERATIONS**
CORNER HOSPITAL ROAD & ESMOND STREET, EMERALD

D	CONSTRUCTION	02/04/2026
REV:	DESCRIPTION:	DATE:
DRAWING: ELECTRICAL SERVICES LEGEND & SITE		
SCALE: 1:250	AT A1	PROJECT NO: C3446a
		DRAWING NO: E01
		REVISION: D